



APARTMENT 3

4 MOUNT STREET - LONDON

INTRODUCTION

A rare opportunity to purchase on prestigious Mount Street. This beautifully refurbished 2/3 bedroom property features contemporary design coupled with luxurious materials and lighting, designed by hãm interiors. Featuring high ceilings and wooden flooring throughout, the property also boasts oblique views of Berkeley Square and far-reaching views of Mount Street. Offering a flexible living space, the property features 3 bedrooms, however the current master bedroom suite could easily be reconfigured to create an additional reception room.

London is one of the world's most desirable cities, with an array of fine restaurants, boutiques, galleries and cultural landmarks. In its most exclusive borough, Mayfair, lies Mount Street. Over recent years, this intimate shopping area has attracted the world's best luxury brands such as Celine and Marc Jacobs, as well as retained such legendary tenants as Scott's and William & Son.





THE APARTMENT

This well proportioned apartment has been the subject of a comprehensive refurbishment, which incorporates solid oak parquet flooring, bespoke joinery, luxury marble bathrooms with under floor heating and CAT 5 cabling.



ELEGANT LATERAL SPACE

Spanning over 1,700 square feet, this beautifully decorated lateral apartment is comprised of a well-proportioned entrance hall, branching onto two separate wings. On one side lies a double reception room with kitchen and separate dining area, providing the perfect entertaining space. To the other, a luxurious master bedroom suite and additional guest bedroom and shower room, finished to an exceptional standard and flooded with light and space.



IN THE HEART OF MAYFAIR

Located in the heart of one of London's oldest and most prestigious districts, 4 Mount Street is perfectly situated for the finest boutiques, bars and restaurants that Mayfair has to offer.



ATTENTION TO DETAIL

The apartment boasts beautifully bespoke quality craftsmanship, with the use of premium grade materials that naturally compliment the grandeur of the interior spaces.





THE PLAN

- 1 Entrance Hall
- 2 Double Reception
- 3 Separate Dining Room
- 4 Master Bedroom Suite
- 5 Second Double Bedroom
- 6 Guest Shower Room
- 7 Kitchen
- Approximately 135 years remaining
- 1,702 Sq Ft

THE DETAILS

TENURE

Leasehold, approximately 135 years remaining

GROUND RENT

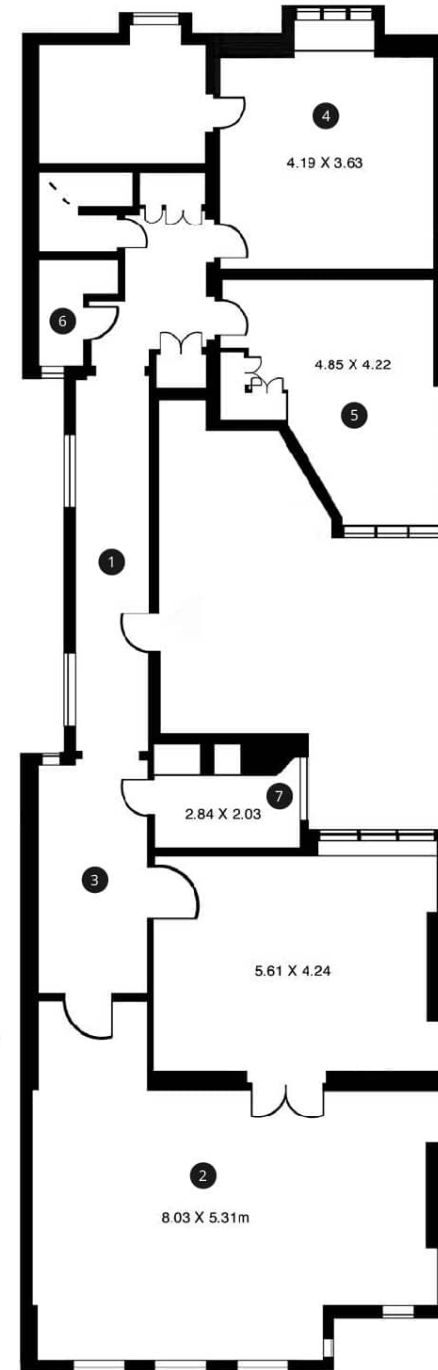
£1,406 per annum

SERVICE CHARGE

£7,880 per annum

PRICE

£4,250,000



Approximate Gross
Internal Area
1,702 sq ft
(158.11 sq m)



THIRD FLOOR

THE AREA

Mount Street is widely considered one of the premier addresses in Mayfair with its choice of luxury boutiques and restaurants.

HOTELS

1. The Connaught
2. The Dorchester
3. Claridges
4. The Chesterfield Mayfair

FOOD & DELICATESSENS

5. Mount St. Deli
6. Scotts
7. Delfino
8. El Pirata

BARS & RESTAURANTS

9. HIX Restaurant
10. Hélène Darroze at The Connaught
11. Icebar London
12. Fino's Wine Cellar
13. Green's Restaurant & Oyster Bar
14. Benares Restaurant
15. Novikov
16. Espelette

FASHION

17. Marc Jacobs
18. Pringle of Scotland
19. Azzaro
20. Mackintosh
21. Alessandra Rich
22. Rubinacci
23. Belenciaga London

