



Aldford House  
Mayfair W1

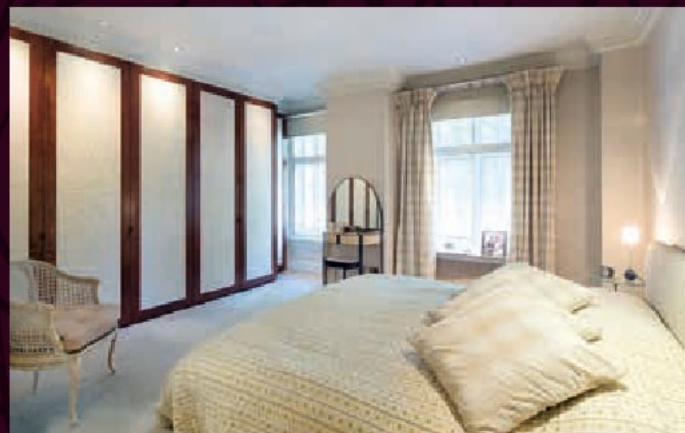
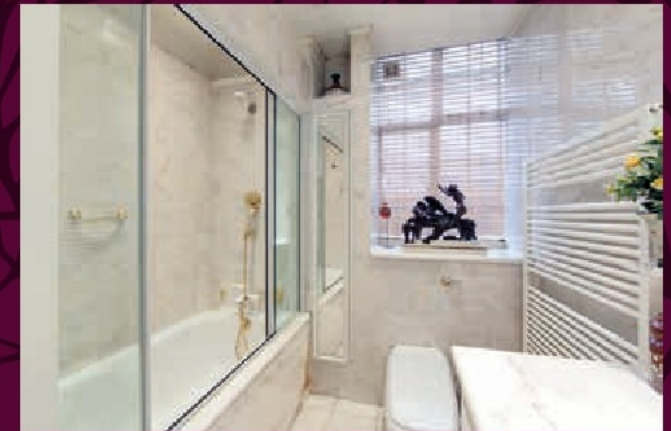
# Aldford House

Mayfair W1

A stunning two bedroom lateral apartment overlooking Hyde Park with 24 hour portorage.

Spanning eight windows across and facing Hyde Park, this bright and quiet apartment found in good condition has a large reception room leading onto the dining room and is served by the kitchen directly opposite allowing for great entertaining space. The apartment benefits further from a large master bedroom with separate dressing area and en suite bathroom, a second double bedroom and family bathroom.





Aldford house is one of Mayfair's 1930's apartment blocks constructed under the consultancy of Sir Edwin Lutyens. Facing Hyde Park and bounded by Park Lane, Park Street and South Street, the building is found on the doorstep of the Mayfair Village.

#### Accommodation & Amenities

Entrance Hall • Reception Room • Dining Room • Kitchen • Master Bedroom with En Suite Bathroom and Separate Dressing Area • Second Double Bedroom • Bathroom • 1,473 Square Feet • Lift



## Aldford House

Mayfair W1

**Tenure:** Leasehold, approximately  
86 years unexpired

**Price:** £4,250,000

**Service Charge:** TBC

**Ground Rent:** TBC

Wetherell and Knight Frank have no authority to make or give any representations or warranties in relation to the property. These particulars do not form part of any offer or contract and must not be relied upon as statements or representations of fact. Any areas, measurements or distances are approximate. The text, photographs and plans are for guidance only and are not necessarily comprehensive. It should not be assumed that the property has all the necessary planning, building regulation or other consents and Wetherell and Knight Frank have not tested any services, equipment or facilities. Purchasers must satisfy themselves by inspection or otherwise. Energy Efficiency Rating: Band D. July 2015.