

BROOKS MEWS

MAYFAIR • W1K







A two bedroom lateral apartment with balcony

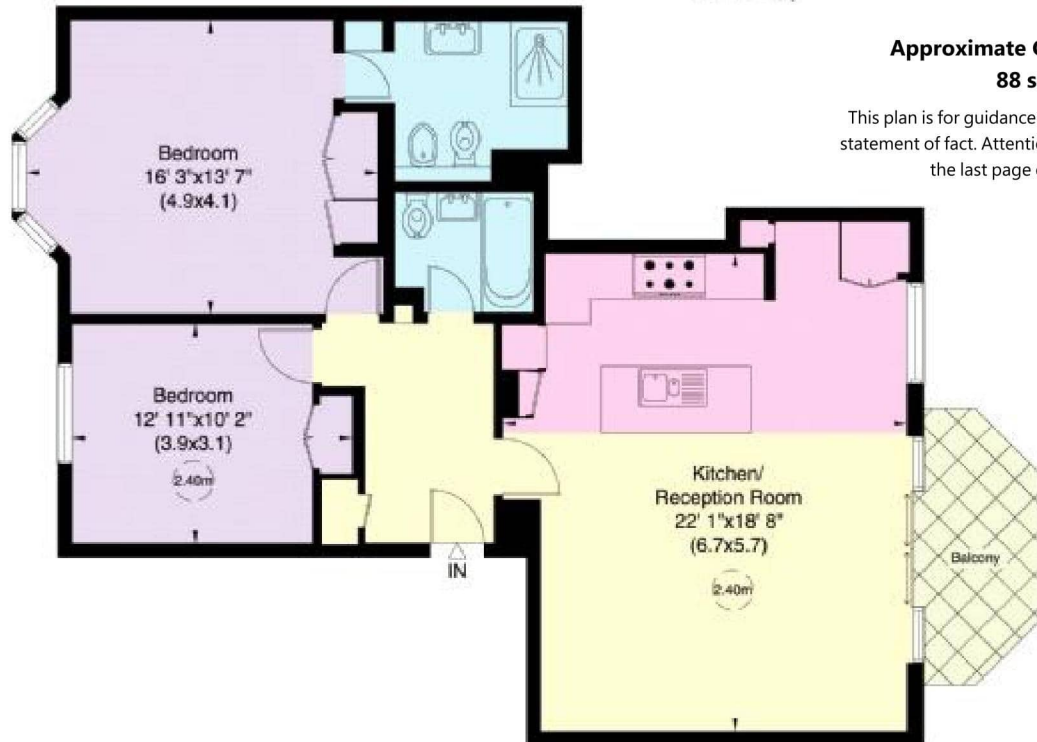
Master bedroom with en suite bathroom • Second bedroom • Bathroom
Open plan kitchen/reception room • Balcony • Lift

Bond Street tube station 0.1 miles



Approximate Gross Internal Floor Area
88 sq.m./927 sq.ft.

This plan is for guidance only and must not be relied upon as a statement of fact. Attention is drawn to the Important Notice on the last page of the text of the Particulars



First Floor

BROOKS MEWS

A two bedroom lateral apartment situated in a popular residential building, moments from Bond Street and benefiting from a private balcony and lift access.

Located on the first floor, this apartment of 927 sq ft comprises a generous master bedroom with en suite and a second bedroom and separate bathroom. The apartment further features a spacious open plan kitchen/reception room, with a private balcony.

Shopping & Entertainment: Brooks Mews is situated moments from world-renowned department store Fenwicks on New Bond Street and Liberty's on Regent Street. Nearby Mount Street also boasts a whole host of designer boutiques including Christian Louboutin, Richard Mille and Dior. The area also offers a number of private members clubs including Annabel's on Berkeley Square and The Savile Club on neighbouring Brook Street.

Situation

Brooks Mews lies between Davies Street and Avery Row. The building is located beside the exclusive Bath and Racquets Club on a quiet cobbled Mayfair Mews adjacent to Claridges.

TERMS

Tenure: Leasehold approximately 40 years remaining

Guide Price: £1,800,000